

Spring driven multi-conductor cable reels specially developed for stage professional lighting. Wide range of models, providing 4/5 conductor for power supply, 12/18/24/32 conductor for lighting, DMX cable for signal and Ethernet CAT.6 for data.

Main Features

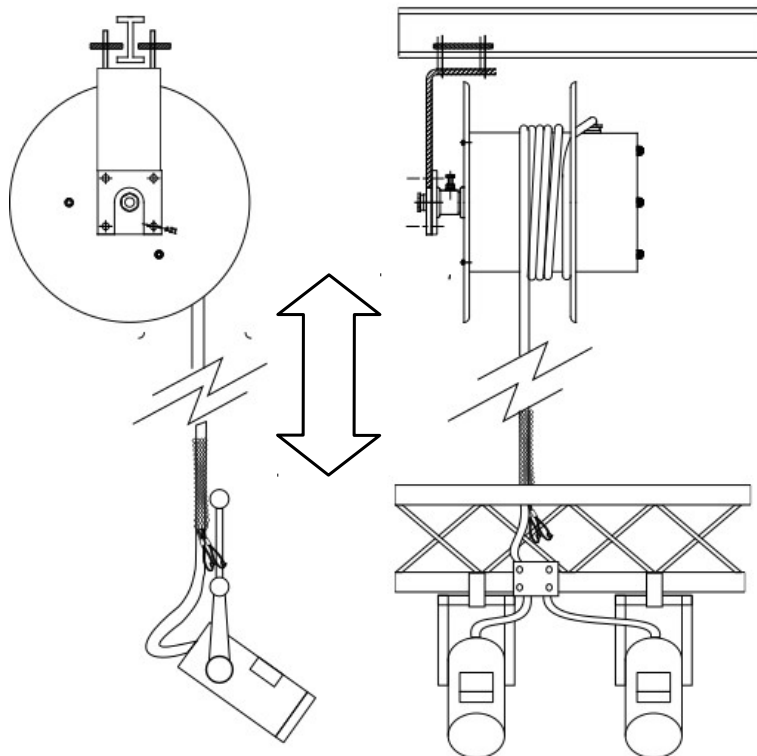
- Random wind open spool cable reels.
- Built-in power springs. Vertical displacement ready.
- Multi-conductor cable and slip ring system, according to application.
- Extraflex or Trommelflex cable type .
- Lightweight aluminium construction for **ST600**, **ST450** and **ST400** models. In carbon steel for the smaller models.
- Finish: Degreasing, blasting, cataphoresis and polyester C4 class painting.
- Basic colours: Black RAL 9005 and grey RAL 7006.
Available any RAL code colour upon request.
- Hermetic contact box. IP54 protection.
- Power spring life approx. 200,000 complete cycles.
- Comply with the relevant CE, FEN and DIN standards.

ST Series Accessories

- Limit switch integrated in the frame. Optional.
- Cable roller guide **BR**. Optional.
- Support for fixing to IPN beams, fixed or mobile with wheels.
- Available customized supports for tubular structures.

Application Example

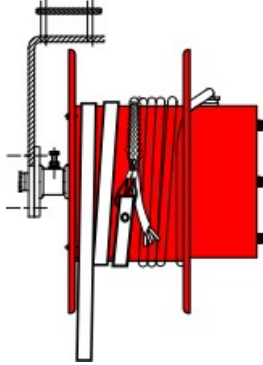
- Movable stage lighting bar, powered by a **ST Series** cable reel, fixed to a theatre roof IPN beam.



ST Series special features included

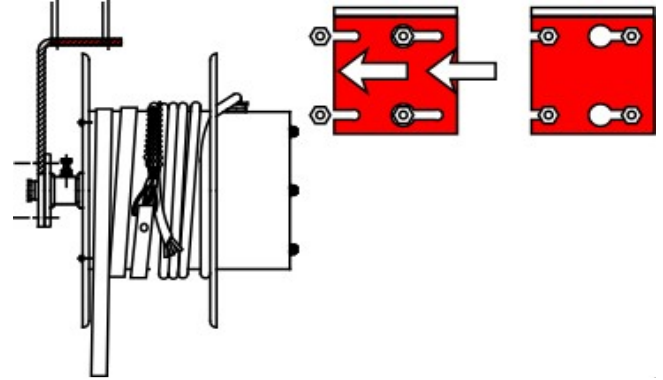
Light-weight body.

Aluminium made body to minimise heavier reel weight (models **ST600**, **ST450** & **ST400**).



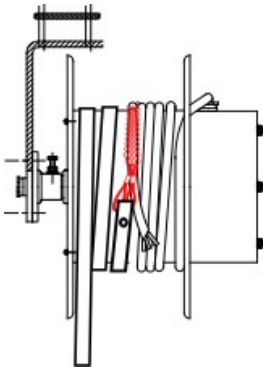
Slot hole fixing system.

This fixing system provides slot holes to easily hung the reel before screwing



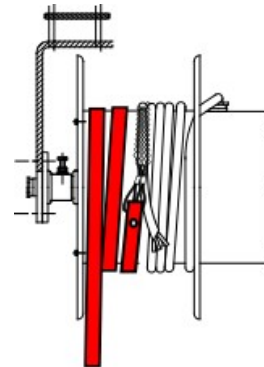
Cable attachment mesh SU.

Steel made anti-pulling cable attachment mesh to avoid stress on the junction box.



Self-tensioning ribbon.

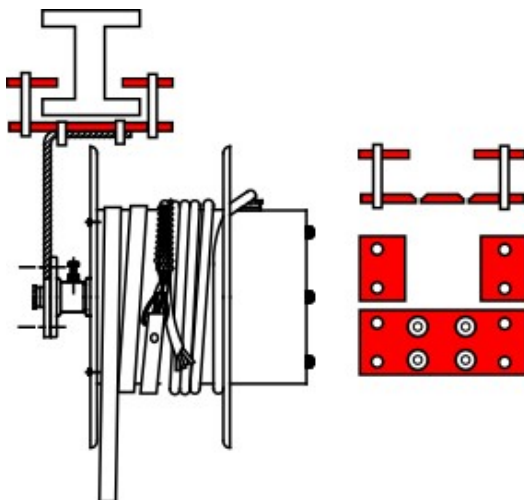
Factory assembled ribbon to ensure the reel is shipped with the optimal working tension.



ST Series optional accessories

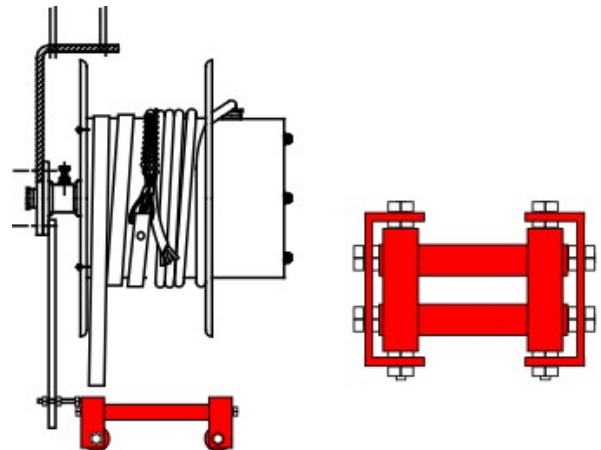
IPN beam support adapter.

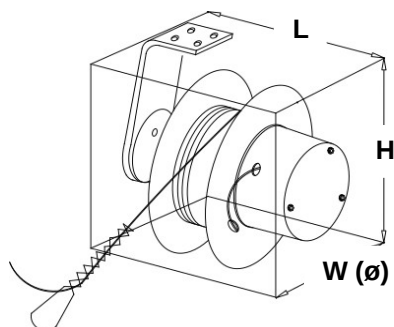
Specially developed for fixing the reel to an IPN beam.



Cable roller guide BR.

It allows a slight angle (up to 15°) in the cable slope with respect to the vertical, preventing the cable from leaving the reel.





Configurations and Dimensions

Table of typical **ST Series** configurations and outer dimensions of the reel with support, for its location.


Up to 36 tracks and the required cable lengths can be supplied.

Model	No. Conduct.	sq mm ²	Current Max. A	Cable Type	Length m	Dimensions mm		
						W (ø)	H (height)	L (axis)
ST250-042510	4	2.5	16	Extraflex	10	265	280	250
ST340-042515	4	2.5	16	Extraflex	15	345	375	310
ST400-042520	4	2.5	16	Extraflex	20	400	545	365
ST400-044010	4	4	32	Extraflex	10	400	545	365
ST450-044015	4	4	32	Extraflex	15	450	570	385
ST450-044020	4	4	32	Extraflex	20	450	570	385
ST450-046010	4	6	46	Extraflex	10	450	570	345
ST450-046015	4	6	46	Extraflex	15	450	570	385
ST450-046020	4	6	46	Extraflex	20	450	570	385
ST450-121510	12	1.5	8	Extraflex	10	450	570	460
ST450-121515	12	1.5	8	Extraflex	15	450	570	460
ST450-121520	12	1.5	8	Extraflex	20	450	570	460
ST450-122510	12	2.5	16	Extraflex	10	450	570	460
ST450-122515	12	2.5	16	Extraflex	15	450	570	460
ST600-122520	12	2.5	16	Extraflex	20	600	730	460
ST450-181510	18	1.5	8	Extraflex	10	450	570	550
ST450-181515	18	1.5	8	Extraflex	15	450	570	550
ST450-181520	18	1.5	8	Extraflex	20	450	570	550
ST450-182510	18	2.5	16	Extraflex	10	450	570	550
ST600-182515	18	2.5	16	Trommerflex	15	600	730	550
ST600-182520	18	2.5	16	Trommerflex	20	600	730	550
ST450-241510	24	1.5	8	Trommerflex	10	450	570	630
ST600-241515	24	1.5	8	Trommerflex	15	600	730	630
ST600-241520	24	1.5	8	Trommerflex	20	600	730	630
ST450-242510	24	2.5	16	Trommerflex	10	450	570	630
ST600-242515	24	2.5	16	Trommerflex	15	600	730	630
ST600-242520	24	2.5	16	Trommerflex	20	600	730	630
ST250-DMX10	5	0.25		DMX	10	265	280	250
ST340-DMX15	5	0.25		DMX	15	345	375	310
ST340-DMX20	5	0.25		DMX	20	345	375	310
ST250-ETH10	8	0.15		Ethernet CAT6	10	265	280	260
ST340-ETH15	8	0.15		Ethernet CAT6	15	345	375	310
ST340-ETH20	8	0.15		Ethernet CAT6	20	345	375	310

Doc. 02.10.00L (R1.0)

Reel Internal Parts

Slip Ring Core **SRC**

See Details -> 


Slip Ring Cores for **ST** Reel Series are made of Q7 quality bronze rings and PA6 polyamide/nylon spacers. The use of bronze allows a longer life of the slip rings in the best conditions of conductivity.

Model	Application	Tracks	Intensity A
SRC-1635XX (1)	Power / data / control signal	Up to 8	16
SRC-3235XX (1)	Power	8 to 36 (2)	16/32
SRC-6070XX (1)	Power	Up to 12	60
SRC-3235XX (1)	Control signal	4 to 36 (2)	-

(1) XX shows the number of tracks.
(2) Available higher quantity of tracks under request.

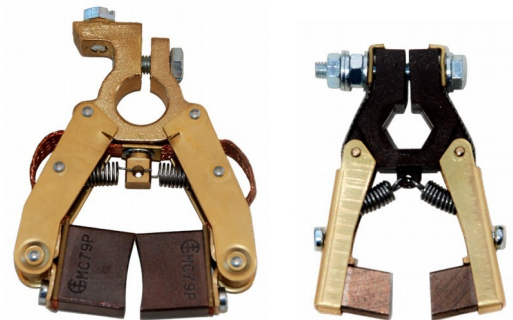


Brush Holders **E**


See Details -> 

Two types of B80 quality brushes are used in the **ST** reel series. This quality is specially designed for greater durability and better contact at low speeds or paused. Thanks to its high copper and low carbon content, it allows a connection quality enough to lead digital signal or power.

Application	Brushes per track	Brush Type	Intensity Max. A
Power	2	E-16	16
Power	4	E-16 (2pcs.)	32
Power	2	E-60	60
Control signal / data	4	E-16 (2pcs.)	-



Power Springs **C**

See Details -> 

ST Reel Series uses different type of springs depending on the weight and length of the cable to be lifted. The material is carbon steel, treated to achieve maximum torque for over 200,000 complete cycles.

Spring Type	Maximum torque Kg/m	Maximum force on the cable Kg
C2	0.3	3.9
C4	1.1	7.8
C5/C6	3.6	22.0

